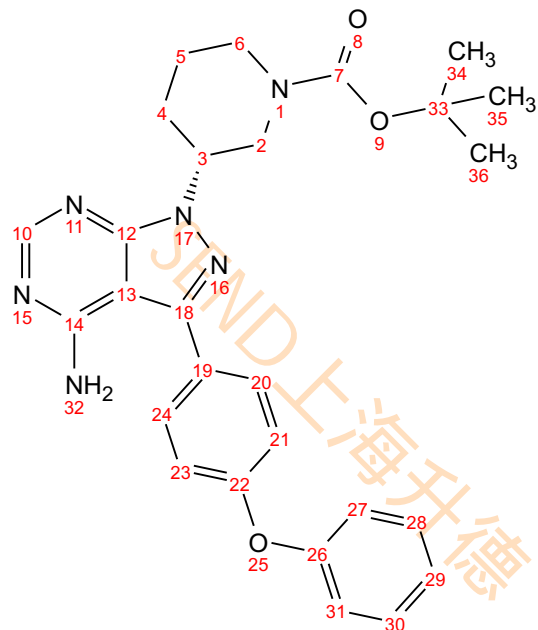


CDCl₃

¹H NMR (400 MHz, cdcl₃) δ 8.36 (s, 1H), 7.64 (s, 2H), 7.40 (s, 2H), 7.16 (d, *J* = 8.5 Hz, 3H), 7.08 (s, 2H), 5.76 (s, 1H), 4.83 (s, 1H), 4.12 (s, 1H), 3.56 – 3.29 (m, 1H), 2.85 (s, 1H), 2.55 (s, 1H), 2.20 (s, 2H), 1.89 (s, 1H), 1.72 (s, 1H), 1.44 (s, 9H).

